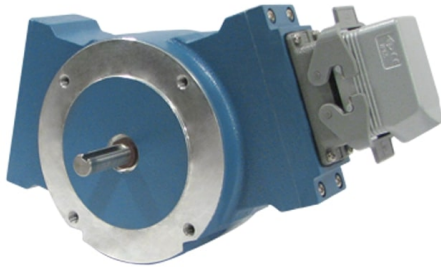


09/14/25



Avtron AV485 SMARTach™ III Encoders



**Severe Mill Duty Magnetic Encoder;
Foot or NEMA 56C Face Mount, 5/8"
Solid Shaft**

Magnetic Durability in a Compact Encoder

Severe Mill Duty Up to 50000 PPR

Replaces Competitive Models
Without Rewiring

Self-Diagnostic LED & Alarm
Output

Foot or NEMA 56C Face Mount
Removable Sensors IP66 Enclosure

High-Power Output Standard

Outputs Fully Short Circuit
Protected

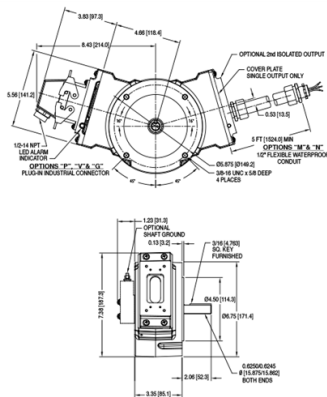
Optional Dual Isolated Outputs

1 Year No-Hassle Warranty

AV485

The AV485 is designed to withstand the worst environments: buried in slag, coated in pulp, sprayed with salt water or cutting coolants, it keeps working. The modular, gull-winged design makes it easy to install and service; the base can be bolted in place without removing the encoder, and the AV5 wide-gap removable sensors require no adjustment or shimming. The sensors are fully potted to protect against liquids, and are interchangeable between AV850, AV485, and AV685 encoders. The universal 5-24V design drives longer cables and is protected against wiring errors and surges. A second backup output is available with the same or different PPR, and offers completely separate electronics for maximum uptime.

OUTLINE DRAWING



MORE AV485 SPECIFICATIONS

Operating Power: Volts: 5 - 24 VDC*
Current: 100mA nom, no load
Output Format: A Quad B with Marker (A, /A, B, /B, Z, /Z)
Second Isolated Output: Optional
Frequency Range:
 @5V, @1m cable, 250 kHz Max
 @24V, @300m cable, #8 output, 45 kHz Max
Maximum Cable Length: 1000'
PPR: 4 - 50000***
Speed: 5000 RPM Max****
Electronics: Fully Encapsulated, IP67**
Temperature: -40° to 120°C* (150°C rotor)^
Vibration: 18 g's
Shock: 1 meter drop test
Chemical: Polyurethane enamel paint protects against salt spray, mild acids, and bases.
Weight: 14 lbs. [6.4 kg] / 16 lb [7.3 kg] dual output

* Electrical specifications for SMARTach III model (serial #30,000 or higher), consult Nidec Industrial Solutions for earlier model specifications.
** Certain connector options may reduce IP rating.
*** (PPR) Standard maximum PPR is 5000. Consult Factory with your application for PPRs up to 50,000.
**** (Speed) Maximum RPM may be limited for PPR > 2,500. Consult Factory with your application.
^ -20°C to 80°C Standard, requires high-temperature model and instrument air feed for 120°C rating

All dimensions are in inches [millimeters].
Specifications and features are subject to change without notice.

Check out our website for more detailed specifications, drawings, and installation instructions. www.avtronencoders.com

SELECTION GUIDE
AV485NXD8HXXW000

<input type="checkbox"/>	<input type="checkbox"/>	<input type="checkbox"/>	<input type="checkbox"/>	<input type="checkbox"/>	<input type="checkbox"/>	<input type="checkbox"/>	<input type="checkbox"/>	<input type="checkbox"/>	<input type="checkbox"/>
MODEL	TEMPERATURE RATING	FOOT MOUNTING	SHAFT MOUNTING	LEFT OUTPUT LINE DRIVER	LEFT OUTPUT PPR	RIGHT OUTPUT LINE DRIVER	RIGHT OUTPUT PPR	CONNECTOR OPTIONS	MODIFICATIONS
AV485	N - -20°C to +80°C (Standard)	X - Standard NEMA 56C 4.5 in. Face Mount (No Foot Mount Included)	D - Dual 5/8 in. x 2 in. Stainless Steel Shafts, each with 3/16 in. Key way & Key	8 - 5-24v in, 5-24v out hi-power standard (HX)	H - 120 PPR	X - No Right Output	X - No Right Output	W - 36 in. Sealed Cable w/Color Coded Leads	000 - No Special Options