

07/22/25



## Avtron AV485 SMARTach™ III Encoders



**Severe Mill Duty Magnetic Encoder;  
Foot or NEMA 56C Face Mount, 5/8"  
Solid Shaft**

### **Magnetic Durability in a Compact Encoder**

Severe Mill Duty Up to 50000 PPR

Replaces Competitive Models  
Without Rewiring

Self-Diagnostic LED & Alarm  
Output

Foot or NEMA 56C Face Mount  
Removable Sensors IP66 Enclosure

High-Power Output Standard

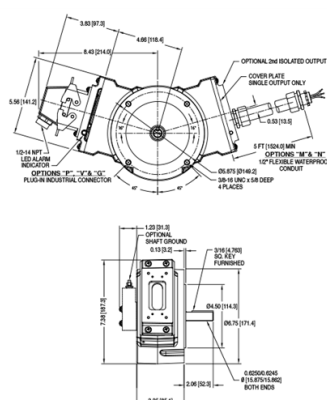
Outputs Fully Short Circuit  
Protected

Optional Dual Isolated Outputs

1 Year No-Hassle Warranty

### **AV485**

The AV485 is designed to withstand the worst environments: buried in slag, coated in pulp, sprayed with salt water or cutting coolants, it keeps working. The modular, gull-winged design makes it easy to install and service; the base can be bolted in place without removing the encoder, and the AV5 wide-gap removable sensors require no adjustment or shimming. The sensors are fully potted to protect against liquids, and are interchangeable between AV850, AV485, and AV685 encoders. The universal 5-24V design drives longer cables and is protected against wiring errors and surges. A second backup output is available with the same or different PPR, and offers completely separate electronics for maximum uptime.










Weight: 14 lbs. [6.4 kg] / 16 lb [7.3 kg] dual output

Specifications and features are subject to change without notice.

## SELECTION GUIDE

## AV485NXS88G

						
<b>MODEL</b>	<b>TEMPERATURE RATING</b>	<b>FOOT MOUNTING</b>	<b>SHAFT MOUNTING</b>	<b>LEFT OUTPUT LINE DRIVER</b>	<b>LEFT OUTPUT PPR</b>	<b>RIGHT OUTPUT PPR</b>
AV485	N - -20°C to +80°C (Standard)	X - Standard NEMA 56C 4.5 in. Face Mount (No Foot Mount Included)	S - Standard Single Ended 5/8 in. x 2 in. Stainless Steel Shaft, with 3/16 in. Key way & Key.	8 - 5-24v in, 5-24v out hi-power standard (HX)	8 - 4800 PPR	G - 100 PPR