

## Avtron AV850 SMARTach™ III Encoders



### Heavy Mill Duty Magnetic Modular Encoder, 8.5" C-Face Mount

#### Magnetic Durability in a Compact Encoder

Heavy Mill Duty

Installation in Minutes!

Up to 50000 PPR

Removable Sensors

Wide-Gap Technology, No Air Gap Adjustment Required

Mounts Securely to Motor

Outputs Fully Short Circuit Protected

Self-Diagnostic LED & Alarm Output

Sealed Electronics

-40°C to +100°C Operation

3 Year No-Hassle Warranty

Excellent for Gear Motors and Brake Applications

#### AV850

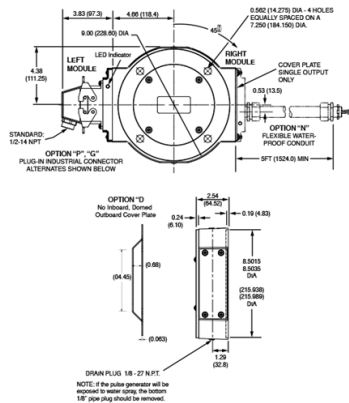
SMARTach™ III Magnetic, Modular Encoder, 8.5" C-Face Mount  
AV850 SMARTach III heavy mill duty modular magnetic encoders fit standard 8.5" FC-Face motors. Other models, from 115mm to 12.5", are available to fit other motor sizes, and hazardous duty models: XR850 and XPH8 intrinsically safe and SV850 functional safety encoders are also available.

Quite simply, the AV850 is designed to eliminate encoder failures. All AV850 electronics are fully encapsulated. There are no moving wearing parts. AV850 sensors locate over 4X farther from the rotor than the competition; no more sensor/rotor grinding!

Miswiring an encoder is common— and it shouldn't cost you time or money. The AV850 has full output short circuit and reverse voltage protection, plus surge protection. AV850 SMARTach III sensors digitally self-tune the outputs to eliminate drive trips caused by poor encoder signals. The universal 5-24V design drives longer cables and is protected against wiring errors.

**Adaptive Electronics:** At power-up you know you installed it right! The green LED tells you your AV5 Sensor is aligned with the rotor and reading signal. If at any time, the AV5 cannot produce consistent signals, the LED changes to red and the optional remote alarm contact activates. However, the encoder keeps working to give you time to schedule service. Even wiring errors and short circuits that cause an over-temp situation will be detected and indicated by changing the LED to orange.  
If you think you need to replace your drives to end your encoder failures, try a better encoder instead. Specify AV850!

## OUTLINE DRAWING



## MORE AV850 ADVANTAGES

- SMARTach II sensors find problems before they cause failure
- Replaces Northstar/LakeShore RIM8500™, NexGen 8500; Avtron M193B, M285; GE AN-DG models
- Resists motor and brake interference noise
- Reverse voltage protection
- Mix and match any PPRs with any rotor
- Permits axial movement up to +/-0.100" [+/-2.54mm]
- Universal rotor for all GE CD style and many Reliance motors.
- Optional overspeed switch
- Optional shaft grounding

## MORE AV850 SPECIFICATIONS

Operating Power (Each Sensor): 5-24V\*  
 Current: 100mA (nominal, no load)  
 Output Format: A Quad B with marker (A, /A, B, /B, Z, /Z)  
 Frequency Range:  
 @5V, @ 1m cable, 250 kHz Max  
 @24V, @300m cable, #8 output, 45 kHz Max  
 Maximum Cable Length: 1000'  
 PPR: 4 - 50000\*\*\*  
 Speed: 6000 RPM Max\*\*\*\*  
 Rotor Positioning: Up to +/-0.100" movement/misalignment  
 Sensor-Rotor Gap: 0.045", +0.015/-0.030" [1.14mm+0.38/- .76mm]  
 Temperature: -40° to 100°C (rotor -40° to 150°C peak non-continuous)  
 Electronics: Fully Encapsulated, IP67\*\*  
 Vibration: 18G  
 Shock: 1 meter drop test  
 Weight: 9lbs. [4kg]; 11lbs. [5kg] dual

\* Electrical specifications for SMARTach III model (serial #30,000 or higher), consult Nidec Industrial Solutions for earlier model specifications.  
 \*\* Certain connector options may reduce IP rating.  
 \*\*\* (PPR) Standard maximum PPR is 5000. Consult Factory with your application for PPRs up to 50,000.  
 \*\*\*\* (Speed) Maximum RPM may be limited for PPR > 2,500. Consult Factory with your application.

All dimensions are in inches [millimeters].  
 Specifications and features are subject to change without notice. Rotors greater than 4.00" [100mm] do not include V-ring seals.

Check out our website for more detailed specifications, drawings, and installation instructions. [www.avtronencoders.com](http://www.avtronencoders.com)

## SELECTION GUIDE

### AV850F88G004

MODEL	COVER PLATES	LEFT OUTPUT LINE DRIVER	LEFT OUTPUT PPR	RIGHT OUTPUT PPR	MODIFICATIONS
AV850	F - Flat Outboard Cover	8 - 5-24v in, 5-24v out hi-power standard (HX)	8 - 4800 PPR	G - 100 PPR	004 - Super Magnetic Shielded Sensor(s)



Nidec Industrial Solutions  
 243 Tuxedo Avenue - Cleveland, Ohio 44131  
 encoderhelpdesk@nidec-industrial.com  
 +1 216-642-1230 - [www.avtronencoders.com](http://www.avtronencoders.com)



Features and specifications are subject to change without notice. EU-SMART™, SMARTSafe™, SMARTTach™, THIN-LINE™, WIDE-GAP™, SAFETach™, and BULLSEYE32™ are trademarks of Nidec Industrial Solution. All other trademarks and registered trademarks are the property of their respective owners. Nidec Industrial Solutions' standard warranty applies. All dimensions approximate.